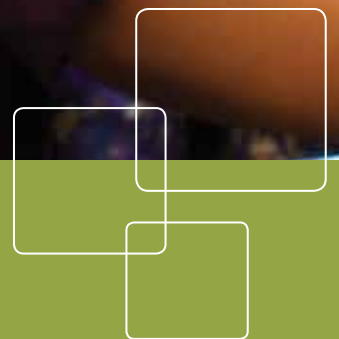


ACCUPLACER® // MyFoundationsLab

**ASSESS AND BUILD ACADEMIC SKILLS
AND CREATE A PATH TO STUDENT SUCCESS.**





Identifying students' academic strengths and weaknesses in preparation for college is more critical than ever.

Providing them with the tools needed to improve their skills is the next step to academic success and increased persistence.

ACCUPLACER®//MyFoundationsLab helps prepare students to advance a level or pass directly into college-level course work, saving time, tuition dollars, and financial aid.

ACCURATE

Assess accurately, easily, and efficiently.

ENGAGING

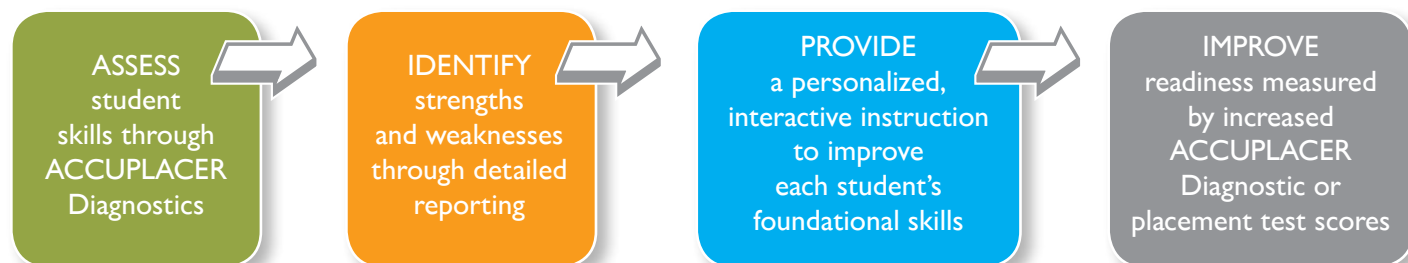
Students receive a personalized, interactive learning experience.

EASY TO USE

Students and administrators will find the program easy to implement and use.



ACCUPLACER® and MyFoundationsLab Together at Work





The College Board and Pearson have partnered to offer ACCUPLACER®/MyFoundationsLab — a diagnostic assessment paired with proven remediation designed to enhance college preparedness and student success.

EFFECTIVE Assessment

Students begin with ACCUPLACER Diagnostics. These adaptive, untimed assessments provide a detailed analysis of each student's academic strengths and weaknesses. Available in four subjects, the suite of assessments is designed for use at both high schools and postsecondary institutions.

- Untimed and designed to take less than one hour per test
- Computer-adaptive
- Immediate results and comprehensive reporting

Coverage

- Reading Comprehension
- Sentence Skills
- Arithmetic
- Elementary Algebra

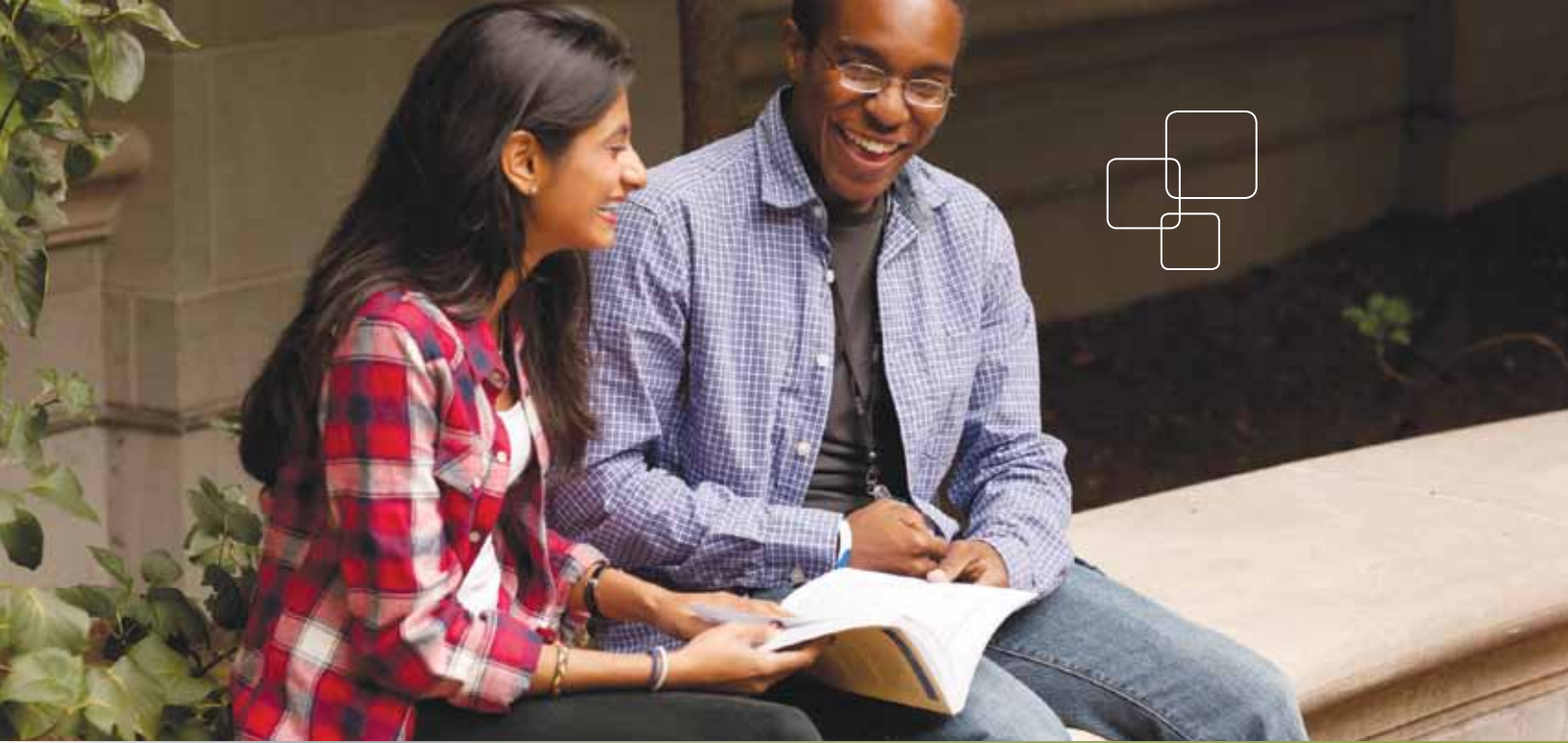
Diagnostics

- 5 domains per test
- 8 items per domain
- Domain-level scores and proficiency statements



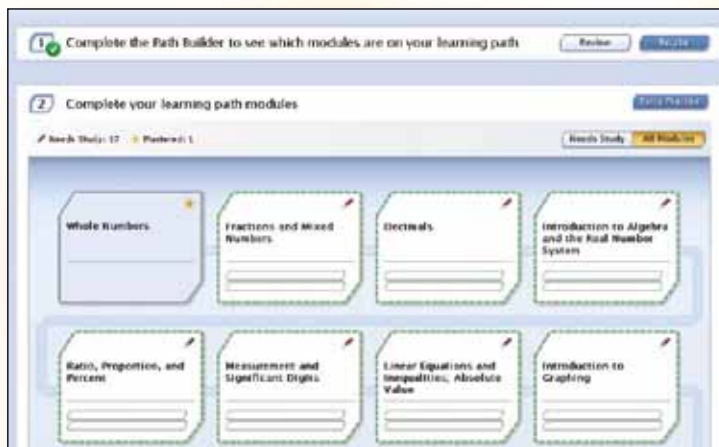
Diagnostic Test Results					
Diagnostic Statement					
Domain	Needs Improvement	Limited Proficiency	Proficient	Score	SEM
Computation with Integers and Fractions	[Progress bar: mostly red]			4	1.5888
Your performance on Computation with Integers and Fractions suggests that you need to improve significantly in this area. These questions test your ability to add, subtract, multiply, and divide whole numbers and fractions, recognize equivalent fractions and mixed numbers, and take squares and square roots.					
Computation with Decimal Numbers	[Progress bar: mostly yellow]			9	1.9555
Your performance on Computation with Decimal Numbers suggests that while you have some skill in this area there is room for improvement. These questions test your ability to add, subtract, multiply, and divide decimal numbers, recognize equivalent fractions and decimal numbers, and take squares and square roots of decimal numbers.					
Problems Involving Percent	[Progress bar: mostly green]			1	1.6421
Your performance on Problems Involving Percent suggests that you need to improve significantly in this area. These questions test your ability to recognize percent and decimal equivalents, find a percent of a number, find what percent one number is of another, find a number when a percent of it is known, and solve word problems involving percents.					
Estimation, Ordering, and Number Sense	[Progress bar: mostly red]			2	1.6345
Your performance on Estimation, Ordering, and Number Sense suggests that you need to improve significantly in this area. These questions test your ability to estimate sums, differences, products, and quotients of fractions and mixed numbers, order fractions, decimals, and percents, round numbers, and solve problems involving the number line.					
Word Problems and Applications	[Progress bar: mostly red]			1	1.8087
Your performance on Word Problems and Applications suggests that you need to improve significantly in this area. These questions test your ability to solve word problems involving rates, ratios, proportions, and fractional parts of a quantity, solve word problems involving measurement, and solve word problems involving averages, graphs and tables.					

Since 1985, ACCUPLACER has been the industry leader, providing a state-of-the-art computer-based assessment program with time-saving and user-friendly features customized to meet your institutional needs.

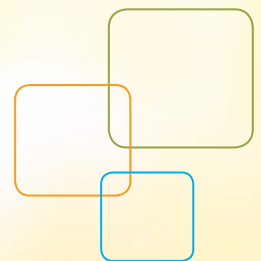


PROVEN Remediation

Based on performance on the diagnostic, ACCUPLACER®//MyFoundationsLab generates a personalized Learning Path for each student. This easy-to-use learning system offers targeted, just-in-time remediation mapped to the ACCUPLACER Diagnostic competencies. MyFoundationsLab provides the academic skill development students need to be successful in college.



- Individualized Learning Paths offer proven tutorials, instruction, and practice with instant feedback.
- Ideal for learners of various levels and ages; students work at their own paces on any computer with an Internet connection.
- Available 24/7, detailed reporting tools allow students and institutions to easily monitor progress.



MEASURABLE Results

ACCUPLACER®//MyFoundationsLab enables learners to build and master the requisite skills to successfully pursue postsecondary degree pathways and accelerate time to completion.

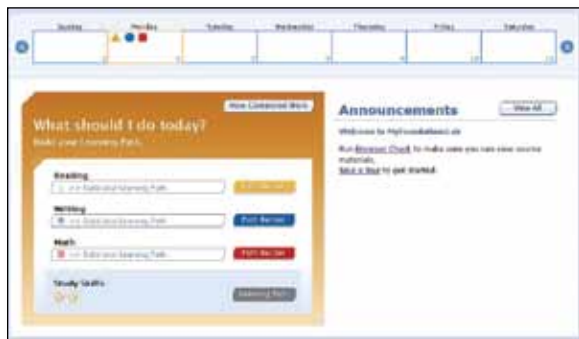
This flexible system of assessment and remediation may be implemented in a variety of readiness programs and settings:

Colleges

- Summer bridge
- Boot camps for placement retesting
- Transitional programs for both traditional and nontraditional learners
- Academic support for existing students

High Schools

- Early intervention
- Credit recovery
- Dual enrollment or “middle college” programs
- GEAR UP programs





ASSESS Quickly.

REMEDiate Thoroughly.

PLACE Accurately.

ADVANCE Successfully.



For more information, simply email us at
ACCUMFL@Pearson.com

© 2011 The College Board. College Board, ACCUPLACER and the acorn logo are registered trademarks of the College Board.
Visit the College Board on the Web: www.collegeboard.org.
Copyright © 2011 Pearson Education, Inc. or its affiliate(s). All rights reserved.